



TECHNICAL MANUAL

# SIRP $\alpha$ /CD47 Blockade Bioassay, Fc-Dependent

Instructions for Use of Products  
JA4801 and JA4805

# SIRP $\alpha$ /CD47 Blockade Bioassay, Fc-Dependent

All technical literature is available at: [www.promega.com/protocols/](http://www.promega.com/protocols/)  
 Visit the website to verify that you are using the most current version of this Technical Manual.  
 Email Promega Technical Services if you have questions on use of this system: [techserv@promega.com](mailto:techserv@promega.com)

1. Description .....	2
2. Product Components and Storage Conditions .....	7
3. Before You Begin .....	8
3.A. Materials to Be Supplied by the User .....	8
4. Assay Protocol .....	9
4.A. Preparing Cell Recovery Medium, Assay Buffer, Bio-Glo-NL™ Reagent and Antibody Samples .....	10
4.B. Plate Layout Design .....	11
4.C. Plating CD47 CHO-K1 Target Cells .....	12
4.D. Preparing Antibody Serial Dilutions .....	12
4.E. Preparing SIRP $\alpha$ Effector Cells .....	13
4.F. Adding SIRP $\alpha$ Effector Cells and Antibody to Assay Plates .....	14
4.G. Preparing and Adding Bio-Glo-NL™ Reagent .....	14
4.H. Data Analysis .....	15
5. Troubleshooting .....	15
6. References .....	16
7. Appendix .....	17
7.A. Representative Assay Results .....	17
7.B. Related Products .....	18
8. Summary of Changes .....	21

## 1. Description

Myeloid cells, including monocytes, macrophages and dendritic cells, play a central role in cancer immunosurveillance by eliminating tumor cells via phagocytosis and presenting tumor antigens to naïve T cells. These cell types express IgG receptors (FcγR) that drive recognition and phagocytosis of antibody-opsonized cells. This process, termed antibody-dependent cellular phagocytosis (ADCP), is an important mechanism of action (MOA) for antibody-based immunotherapies. Therapeutic strategies designed to elicit or enhance ADCP have shown increased efficacy against a variety of human cancers (1–4).

Phagocytosis is regulated by a complex network of checkpoints that facilitate removal of aberrant or infected cells while preserving healthy tissues. CD47, a “marker-of-self” protein expressed on virtually all cell types, engages the myeloid-specific receptor signal regulatory protein alpha (SIRPα) to prevent phagocytosis of healthy cells (5). Despite its important physiological role, this SIRPα/CD47 checkpoint contributes to immune escape by tumor cells, many of which overexpress CD47 and thereby evade phagocytosis. Biologics that inhibit SIRPα/CD47 interaction promote phagocytosis of tumor cells in vitro and have shown promising therapeutic efficacy. SIRPα/CD47 inhibitors bearing a functional Fc domain may further enhance tumor clearance through combined checkpoint blockade and initiation of ADCP (6).

Current methods for assessing the activity of SIRPα/CD47 checkpoint inhibitors rely on primary monocyte-derived macrophages and direct measurement of phagocytosis. These assays are laborious and highly variable due to their reliance on donor cells, complex assay protocols and nonqualified assay reagents. As a result, these assays are difficult to establish in a quality-controlled setting.

The SIRPα/CD47 Blockade Bioassay, Fc-Dependent<sup>(a-e)</sup> (Cat.# JA4801, JA4805) is a bioluminescent reporter cell-based assay that overcomes the limitations of existing assays. The bioassay is easy-to-use, quantitative and demonstrates the functional response of SIRPα/CD47 inhibitors bearing a functional Fc domain. It can be used to measure the potency and stability of antibodies and other Fc-functional biologics that block SIRPα/CD47 interaction. The assay consists of two genetically engineered cell lines:

- **SIRPα Effector Cells:** A monocytic cell-line with a stably integrated NanoLuc<sup>®</sup> (NL) luciferase reporter driven by FcγR and SIRPα/CD47 pathway-dependent response elements.
- **CD47 CHO-K1 Target Cells:** CHO-K1 cells engineered to express human CD47.

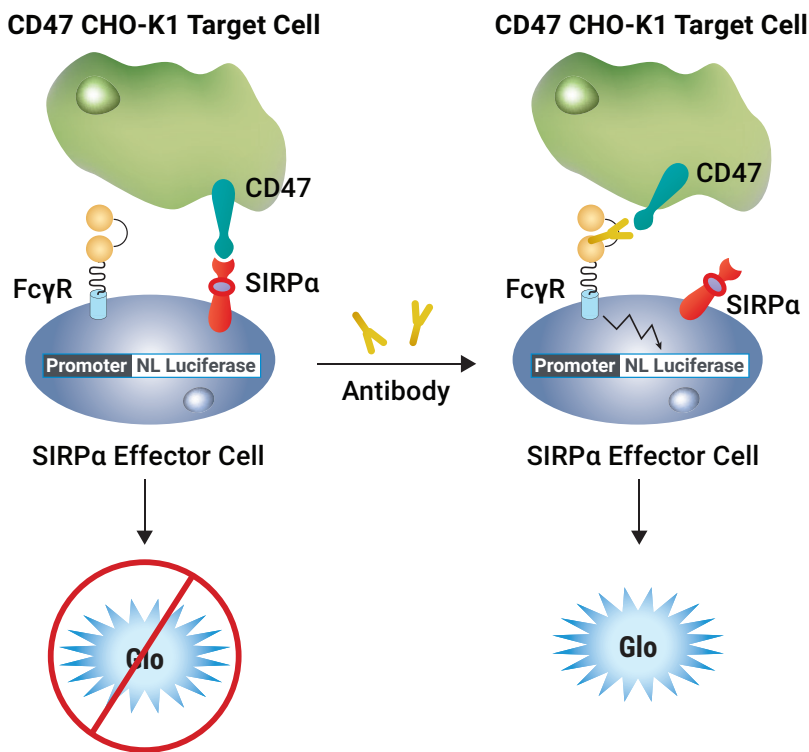
The SIRPα Effector Cells and CD47 CHO-K1 Target Cells are provided in thaw-and-use format, as cryopreserved cells that can be thawed, plated and used in an assay without the need for cell culture and propagation.

When the two cell types are cocultured, SIRPα/CD47 interaction prevents FcγR signaling and promoter-driven luminescence. Addition of Fc-functional anti-SIRPα or anti-CD47 blocking antibody disrupts SIRPα/CD47 interaction and activates FcγR, resulting in promoter-driven luminescence (Figure 1). The bioluminescent signal is quantified using the Bio-Glo-NL<sup>™</sup> Luciferase Assay System and a standard luminometer such as the GloMax<sup>®</sup> Discover System (see Related Products, Section 9.C).

**Note:** The SIRPα/CD47 Blockade Bioassay, Fc-Dependent, was designed specifically for Fc-functional SIRPα/CD47 checkpoint inhibitors. For Fc-silent or Fc-null inhibitors, we recommend using the SIRPα/CD47 Blockade Bioassay (Cat.# JA6011, JA6015).

The SIRP $\alpha$ /CD47 Blockade Bioassay, Fc-Dependent, reflects the mechanism of action of biologics designed to block SIRP $\alpha$ /CD47 and activate Fc $\gamma$ R. Specifically, Fc $\gamma$ R-mediated luminescence is increased in a dose-dependent manner following anti-CD47 blocking antibody [clone B6.H12] addition, but not after anti-4-1BB, anti-ICOS or anti-PD-1 blocking antibody addition. Increased luminescence is dependent upon SIRP $\alpha$ /CD47 blockade (Figure 2).

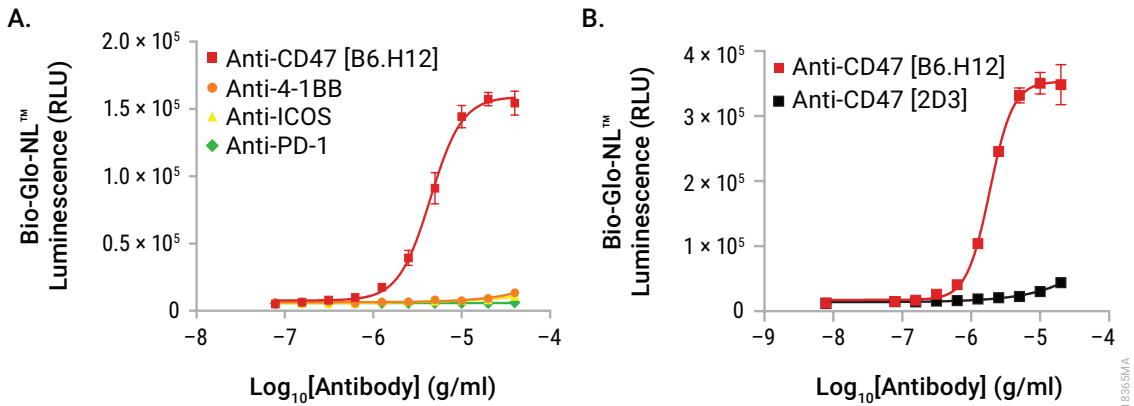
The bioassay is suitable for measuring antibody stability in accordance with International Council for Harmonisation of Technical Requirements for Pharmaceuticals for Human Use (ICH) guidelines (Figure 3). The bioassay can be performed in a two-day timeframe, and the workflow is simple, robust and compatible with both 96- and 384-well plate formats used for antibody screening in early drug discovery (Figure 4).



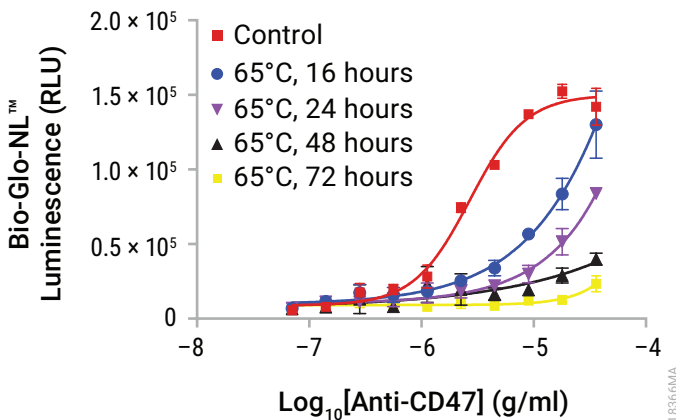
**Figure 1. Representation of the SIRP $\alpha$ /CD47 Blockade Bioassay, Fc-Dependent.** The SIRP $\alpha$ /CD47 Blockade Bioassay, Fc-Dependent, consists of SIRP $\alpha$  Effector Cells, CD47 CHO-K1 Target Cells, and an Fc-functional SIRP $\alpha$ /CD47 inhibitor. When all components are cocultured, the Fc-functional SIRP $\alpha$ /CD47 inhibitor disrupts SIRP $\alpha$ /CD47 interaction and activates Fc $\gamma$ R on the surface of the effector cells. This results in promoter-driven luminescence that can be detected and quantified using Bio-Glo-NL™ Reagent.

18364MA

1. Description (continued)

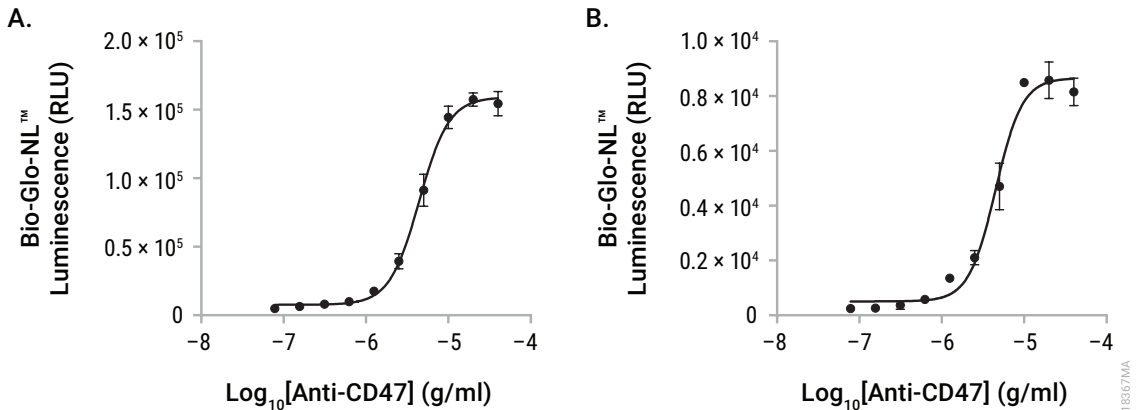


**Figure 2. The SIRPa/CD47 Blockade Bioassay, Fc-Dependent, reflects the MOA and specificity for antibodies designed to block SIRPa/CD47 interaction and activate FcγR. Panel A.** SIRPa Effector Cells were incubated with CD47 CHO-K1 Target Cells in the presence of serial titrations of blocking antibodies as indicated. **Panel B.** SIRPa Effector Cells were incubated with CD47 CHO-K1 Target Cells in the presence of anti-CD47 blocking [B6.H12] or nonblocking [2D3] antibody. After a 4-hour induction, Bio-Glo-NL™ Reagent was added and luminescence quantified using the GloMax® Discover System. Data were fitted to a four-parameter logistic curve using GraphPad Prism® software. Data were generated using thaw-and-use cells.



**Figure 3. The SIRPα/CD47 Blockade Bioassay, Fc-Dependent, is stability-indicating.** Samples of Anti-CD47 blocking antibody [B6.H12] were maintained at 4°C (control) or heat-treated at the indicated times and temperatures, then analyzed using the SIRPα/CD47 Blockade Bioassay, Fc-Dependent. Bio-Glo-NL™ Reagent was added and luminescence quantified using the GloMax® Discover System. Data were fitted to a four-parameter logistic curve using GraphPad Prism® software. Data were generated using thaw-and-use cells.

1. Description (continued)



**Figure 4. The SIRPα/CD47 Blockade Bioassay, Fc-Dependent, is amenable to 384-well plate format. Panel A.** The SIRPα/CD47 Blockade Bioassay, Fc-Dependent, was performed in 96-well plates as described in this technical manual, with a titration of Anti-CD47 blocking antibody [B6.H12]. **Panel B.** The SIRPα/CD47 Blockade Bioassay, Fc-Dependent, was performed in 384-well format as briefly described here. Thaw-and-use CD47 CHO-K1 Target Cells were thawed and plated at 2 × 10<sup>3</sup> cells/15μl/well 16–24 hours prior to assay, in a 384-well white assay plate (e.g., Corning® Cat.# 3570). On the day of the assay, 5μl of 5X serially diluted Anti-CD47 blocking antibody [B6.H12] was added, followed by 6 × 10<sup>3</sup>/5μl/well of SIRPα Effector Cells. After a 4-hour incubation at 37°C, 5% CO<sub>2</sub>, 25μl/well of Bio-Glo-NL™ Reagent was added and luminescence quantified using the GloMax® Discover System. Data were fitted to four-parameter logistic curves using GraphPad Prism® software. The EC<sub>50</sub> values were 4.4 and 4.4μg/ml for the 96- and 384-well formats, respectively, and the fold induction was 32 and 35 for 96- and 384-well formats, respectively. Data were generated using thaw-and-use cells.

## 2. Product Components and Storage Conditions

PRODUCT	SIZE	CAT.#
<b>SIRPα/CD47 Blockade Bioassay, Fc-Dependent</b>	<b>1 each</b>	<b>JA4801</b>

Not for Medical Diagnostic Use. Each kit contains sufficient reagents for 120 assays using the inner 60 wells of two 96-well plates. Includes:

- 1 vial SIRPα Effector Cells (0.5ml per vial)
- 1 vial CD47 CHO-K1 Target Cells (0.5ml per vial)
- 25ml Ham's F12 Medium
- 36ml RPMI 1640 Medium
- 4ml Fetal Bovine Serum
- 1 vial Bio-Glo-NL™ Luciferase Assay Substrate
- 10ml Bio-Glo-NL™ Luciferase Assay Buffer

PRODUCT	SIZE	CAT.#
<b>SIRPα/CD47 Blockade Bioassay, Fc-Dependent, 5X</b>	<b>1 each</b>	<b>JA4805</b>

Not for Medical Diagnostic Use. Each kit contains sufficient reagents for 600 assays using the inner 60 wells of ten 96-well plates. Includes:

- 5 vials SIRPα Effector Cells (0.5ml per vial)
- 5 vials CD47 CHO-K1 Target Cells (0.5ml per vial)
- 5 × 25ml Ham's F12 Medium
- 5 × 36ml RPMI 1640 Medium
- 5 × 4ml Fetal Bovine Serum
- 5 vials Bio-Glo-NL™ Luciferase Assay Substrate
- 5 × 10ml Bio-Glo-NL™ Luciferase Assay Buffer

**Storage Conditions:** Upon arrival, immediately transfer the cell vials to below  $-140^{\circ}\text{C}$  (freezer or liquid nitrogen vapor phase) for long-term storage. Do not store cell vials submerged in liquid nitrogen. Do not store cell vials at  $-80^{\circ}\text{C}$  because this will decrease cell viability and performance.

Store Bio-Glo-NL™ Luciferase Assay Substrate, Bio-Glo-NL™ Luciferase Assay Buffer and Fetal Bovine Serum (FBS) at  $-30^{\circ}\text{C}$  to  $-10^{\circ}\text{C}$ . Avoid multiple freeze-thaw cycles of the serum. The Bio-Glo-NL™ Luciferase Assay Substrate remains liquid and does not freeze.

Store RPMI 1640 Medium and Ham's F12 Medium at  $+2^{\circ}\text{C}$  to  $+10^{\circ}\text{C}$ , protected from fluorescent light.



### 3. Before You Begin

**Please read through the entire protocol to become familiar with the components and the assay procedure before beginning.**

Remove the product label from the box containing vials with cells or note the catalog number, lot number and dispensed lot number from the label. This information can be used to download documents for the specified product from the web site, such as the Certificate of Analysis.

**!** **Note:** The SIRPα/CD47 Blockade Bioassay, Fc-Dependent, uses the Bio-Glo-NL™ Luciferase Assay System (Cat.# J3081, J3082, J3083) for detection. **Do not** use the Bio-Glo™ Luciferase Assay System (Cat.# G7940, G7941).

The SIRPα/CD47 Blockade Bioassay, Fc-Dependent, is intended for use with user-provided antibodies or other Fc-functional biologics designed to inhibit SIRPα/CD47 interaction and activate FcγR. The recommended induction time and assay buffer components described in Section 4 were established using Anti-CD47 blocking antibody [B6.H12] with the required CD47 CHO-K1 Target Cells. Representative data generated using Anti-CD47 blocking antibody [B6.H12] are shown in Section 7.A, Representative Assay Results. You may need to adjust the parameters provided and optimize assay conditions for your own antibody or biologic samples.

The SIRPα/CD47 Blockade Bioassay, Fc-Dependent, produces a bioluminescent signal and requires a sensitive luminescence plate reader. Bioassay development and performance data included in this Technical Manual were generated using the GloMax® Discover System (see Section 7.B, Related Products). An integration time of 0.5 second/well was used for all readings. The bioassay is compatible with most other plate-reading luminometers, though relative luminescence unit (RLU) readings will vary with the sensitivity and settings of each instrument. If using a reader with adjustable gain, we recommend a high-gain setting. The use of different instruments and gain adjustment will affect the magnitude of the raw data but should not affect the measured relative potency of test samples.

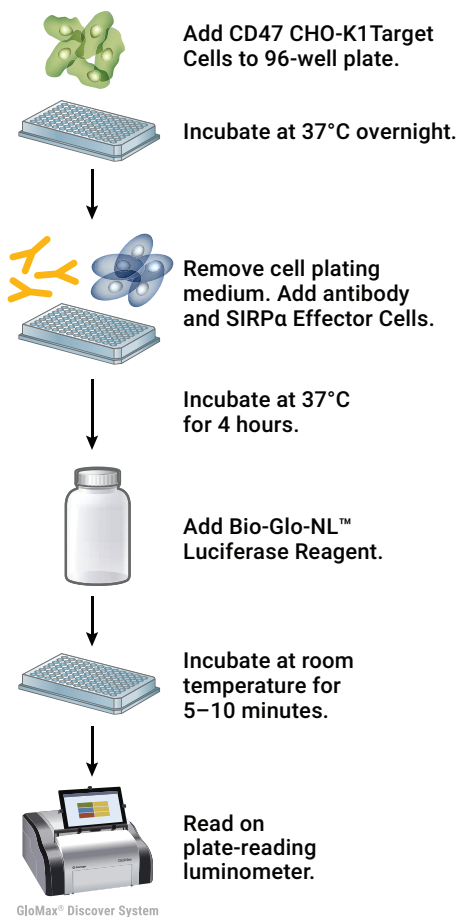
#### 3.A. Materials to Be Supplied by the User

- user-defined, anti-CD47 blocking antibody or other Fc-functional biologic designed to inhibit SIRPα/CD47 interaction
- solid-white, flat-bottom 96-well assay plates (e.g., Corning® Cat.# 3917) or 384-well assay plates (e.g., Corning® Cat.# 3570) for plating and reading luminescence
- sterile clear V-bottom 96-well plate with lid (e.g., Costar® Cat.# 3896) for low volume antibody preparation (100–300µl per dilution), or sterile dilution reservoirs with lid (Dilux™ Cat.# D-1002) for high volume antibody preparation (300µl–5ml per dilution)
- pipettes (single-channel and 12-channel; for best results use both manual and electronic pipettes as needed)
- sterile 15ml and 50ml conical tubes
- sterile reagent reservoirs (e.g., Corning®/Costar® Cat.# 4870)
- 37°C, 5% CO<sub>2</sub> incubator
- 37°C water bath
- sensitive plate reader with glow luminescence measuring capability or luminometer (e.g., GloMax® Discover System or equivalent)
- **optional:** Anti-CD47 blocking antibody [B6.H12] (e.g., Invitrogen Cat.# 16-0479-81)

#### 4. Assay Protocol

This procedure illustrates the use of the SIRPa/CD47 Blockade Bioassay, Fc-Dependent, to test two antibody samples against a reference sample in a single assay run (Figure 5). Each test and reference antibody is run in triplicate, in a ten-point dilution series, in a single 96-well assay plate using the inner 60 wells. Other experimental and plate layouts are possible but may require further optimization.

**Note:** When preparing test and reference antibodies, choose an appropriate starting concentration and dilution scheme to achieve a complete dose-response curve with proper upper and lower asymptotes and sufficient points on the slope. For reference, we use 20µg/ml as a starting concentration (1X) and twofold serial dilution when testing Anti-CD47 blocking antibody [B6.H12].



**Figure 5. Schematic protocol for the SIRPa/CD47 Blockade Bioassay, Fc-Dependent.**


#### 4.A. Preparing Cell Recovery Medium, Assay Buffer, Bio-Glo-NL™ Reagent and Antibody Samples

**CD47 CHO-K1 Cell Recovery Medium:** On the day before the assay, prepare 14.5ml of cell recovery medium (90% Ham's F-12/10% FBS). Thaw the FBS overnight at +2°C to +10°C or in a 37°C water bath on the day of use. Mix well and warm to 37°C before use. To prepare cell recovery medium, add 1.5ml of FBS to 13ml of Ham's F-12 Medium. For reference, 14.5ml of cell recovery medium is sufficient to thaw and plate 1 vial of CD47 CHO-K1 Target Cells. If multiple vials will be thawed, then scale the amount of cell recovery medium appropriately. Warm the remaining Ham's F-12 Medium to 37°C. Store the remaining FBS at +2°C to +10°C for use in preparing the assay buffer on the day of the assay.

**Assay Buffer:** On the day of the assay, prepare 20ml of assay buffer (98% RPMI 1640/2% FBS). Add 0.4ml of FBS to 19.6ml of RPMI 1640 Medium. Mix well and warm to 37°C before use. Warm the remaining RPMI 1640 Medium to 37°C.

**Note:** The recommended assay buffer contains 2% FBS. This concentration of FBS works well for antibodies we have tested. If you experience assay performance issues when using this assay buffer, we recommend testing different serum concentrations in the range of 0.5–10%.

**Bio-Glo-NL™ Luciferase Reagent:** For reference, 10ml of Bio-Glo-NL™ Reagent is sufficient to assay 120 wells in a 96-well assay format. The Bio-Glo-NL™ Luciferase Assay Substrate should always be stored at –30°C to –10°C. Thaw the Bio-Glo-NL™ Luciferase Assay Buffer at room temperature (do not exceed 25°C) during the 4-hour assay induction period. We recommend preparing the reconstituted Bio-Glo-NL™ Luciferase Assay Reagent immediately before use. For instructions on the use of Bio-Glo-NL™ Luciferase Assay System, please refer to the *Bio-Glo-NL™ Luciferase Assay System Quick Protocol*, #FB227.

 **Note:** The SIRPα/CD47 Blockade Bioassay, Fc-Dependent, is compatible only with Bio-Glo-NL™ Luciferase Assay Reagent. **Do not** use Bio-Glo™ Luciferase Assay Reagent with the SIRPα/CD47 Blockade Bioassay, Fc-Dependent.

**Test and Reference Samples:** Using assay buffer as the diluent, prepare stock starting dilutions (dilu1, 1.5X final concentration) of two test antibodies (400µl each) and one reference antibody (800µl) in 1.5ml tubes. Store the tubes containing antibody starting dilutions appropriately before making antibody serial dilutions.

**Note:** If you are using Anti-CD47 blocking antibody [B6.H12], as a reference antibody in your assay, prepare an 800µl starting dilution of 30µg/ml antibody (dilu1, 1.5X final concentration) in assay buffer.

#### 4.B. Plate Layout Design


For the protocol described in Section 4, use the plate layout illustrated in Figure 6 as a guide. The protocol describes serial replicate dilutions ( $n = 3$ ) of test and reference antibody to generate two ten-point dose-response curves for each plate.

Recommended Plate Layout Design													
	1	2	3	4	5	6	7	8	9	10	11	12	
A	B	B	B	B	B	B	B	B	B	B	B	B	Assay Buffer (B)
B	B	no Ab	dilu9	dilu8	dilu7	dilu6	dilu5	dilu4	dilu3	dilu2	dilu1	B	Reference Ab
C	B	no Ab	dilu9	dilu8	dilu7	dilu6	dilu5	dilu4	dilu3	dilu2	dilu1	B	Test Ab
D	B	no Ab	dilu9	dilu8	dilu7	dilu6	dilu5	dilu4	dilu3	dilu2	dilu1	B	Reference Ab
E	B	no Ab	dilu9	dilu8	dilu7	dilu6	dilu5	dilu4	dilu3	dilu2	dilu1	B	Test Ab
F	B	no Ab	dilu9	dilu8	dilu7	dilu6	dilu5	dilu4	dilu3	dilu2	dilu1	B	Reference Ab
G	B	no Ab	dilu9	dilu8	dilu7	dilu6	dilu5	dilu4	dilu3	dilu2	dilu1	B	Test Ab
H	B	B	B	B	B	B	B	B	B	B	B	B	Assay Buffer (B)

**Figure 6. Example plate layout showing nonclustered sample locations of test antibody and reference antibody dilution series and wells containing assay buffer only (denoted by “B”).**

#### 4.C. Plating CD47 CHO-K1 Target Cells

Thaw-and-use CD47 CHO-K1 Target Cells are sensitive and care should be taken to follow the cell thawing and plating procedures exactly as described. Do not overmix or overwarm the cell reagents. No additional cell culture or manipulation is required or recommended. We recommend that you thaw and dilute a maximum of two vials of thaw-and-use cells at any one time.

 Follow institutional guidelines for handling, including use of personal protective equipment (PPE) and waste disposal for biohazardous material.

Perform the following steps in a sterile cell culture hood.

1. On the day before performing the assay, prepare 14.5ml of cell recovery medium (90% Ham's F-12/10% FBS) in a sterile 50ml conical tube, as described in Section 4.A.
2. Remove one vial of CD47 CHO-K1 Target Cells from storage at  $-140^{\circ}\text{C}$  and transfer to the bench on dry ice. Thaw the cells in a  $37^{\circ}\text{C}$  water bath until just thawed (about 2 minutes). While thawing, gently agitate and visually inspect the vial. Do not invert.
3. Gently mix the cell suspension by pipetting, then transfer 0.5ml of cells to the tube containing 14.5ml of cell recovery medium. Mix well by gently inverting the tube 1–2 times.
4. Transfer the suspension to a sterile reagent reservoir. Using a multichannel pipette, immediately dispense  $100\mu\text{l}$  of the cell suspension to each of the inner 60 wells of two 96-well white flat-bottom assay plates.
5. Add  $100\mu\text{l}$  of prewarmed ( $37^{\circ}\text{C}$ ) Ham's F12 Medium to each of the outside wells of the assay plates.
6. Place lids on the assay plates and incubate in a  $37^{\circ}\text{C}$ , 5%  $\text{CO}_2$  incubator overnight (18–22 hours).

#### 4.D. Preparing Antibody Serial Dilutions

The instructions described here are for preparation of a single stock of twofold serial dilutions of a single antibody for analysis in triplicate ( $200\mu\text{l}$  of each dilution provides a sufficient volume for analysis in triplicate). Alternatively, you can prepare three independent stocks of serial dilutions to generate triplicate samples. To prepare twofold serial dilutions, you will need  $800\mu\text{l}$  of reference antibody at 1.5X the highest antibody concentration in your dose-response curve. You will need  $400\mu\text{l}$  of each test antibody at 1.5X the highest antibody concentration in each of the test antibody dose-response curves. For other dilution schemes, adjust the volumes accordingly.

**Note:** If you are using Anti-CD47 blocking antibody [B6.H12], as a control in the assay, follow the instructions below to prepare twofold serial dilutions. A twofold serial dilution for test antibodies is listed as an example below as well.

1. On the day of the assay, prepare an appropriate amount of assay buffer as described in Section 4.A.
2. Add  $400\mu\text{l}$  of reference antibody starting dilution (dilu1, 1.5X final concentration) to well 11 of two sterile dilution reservoirs (Figure 7).
3. Add  $400\mu\text{l}$  of each test antibody starting dilution (dilu1, 1.5X final concentration) to well 11 in separate sterile dilution reservoirs (Figure 7).
4. Add  $200\mu\text{l}$  of assay buffer to other wells in sterile dilution reservoirs, from well 10 to well 2.

5. Transfer 200µl of the antibody starting dilutions from well 11 into well 10. Mix well by pipetting. Avoid creating bubbles.
6. Repeat equivalent twofold serial dilutions across the dilution reservoirs from right to left through well 3. Do not dilute into well 2.  
**Note:** Well 2 of each dilution reservoir contains 200µl of assay buffer without antibody as a negative control.
7. Cover dilution reservoirs with lids and keep at ambient temperature (22–25°C) while preparing the SIRPa Effector Cells.

Recommended Dilution Reservoir Layouts for Reference and Test Antibodies.													
	1	2	3	4	5	6	7	8	9	10	11	12	
Reservoir #1		no Ab	dilu9	dilu8	dilu7	dilu6	dilu5	dilu4	dilu3	dilu2	dilu1		Reference Ab
Reservoir #2		no Ab	dilu9	dilu8	dilu7	dilu6	dilu5	dilu4	dilu3	dilu2	dilu1		Reference Ab
Reservoir #3		no Ab	dilu9	dilu8	dilu7	dilu6	dilu5	dilu4	dilu3	dilu2	dilu1		Test Ab
Reservoir #4		no Ab	dilu9	dilu8	dilu7	dilu6	dilu5	dilu4	dilu3	dilu2	dilu1		Test Ab

**Figure 7. Example layout showing antibody serial dilutions.**

#### 4.E. Preparing SIRPa Effector Cells

Thaw-and-use SIRPa Effector Cells are sensitive and care should be taken to follow the cell thawing and plating procedures exactly as described. Do not overmix or overwarm the cell reagents. No additional cell culture or manipulation is required or recommended. We recommend that you thaw and dilute a maximum of two vials of thaw-and-use cells at any one time.

1. Label a sterile 15ml conical tube “Effector Cells”. Add 4.5ml of prewarmed (37°C) assay buffer to the 15ml conical tube.
2. Remove one vial of SIRPa Effector Cells from storage at –140°C and transfer to the bench on dry ice. Thaw the cells in a 37°C water bath until just thawed (about 2 minutes). While thawing, gently agitate and visually inspect the vial.
3. Gently mix the cell suspension by pipetting, then transfer 0.5ml cells to the 15ml conical tube containing 4.5ml of assay buffer. Mix well by gently inverting the tube.

#### 4.F. Adding SIRPα Effector Cells and Antibody to Assay Plates

1. Take the 96-well assay plates containing CD47 CHO-K1 Target Cells out of the incubator. Invert the assay plate over a sink to remove the medium. Then place the inverted plate on paper towels for 5–10 seconds to drain any remaining medium. Alternatively, remove 95µl of medium from each of the wells using a manual multichannel pipette.
2. Using a multichannel pipette, add 50µl of the appropriate antibody dilution (Figure 7) to the assay plates according to the plate layout in Figure 6.
3. Mix the SIRPα Effector Cells by tube inversion and transfer the suspension to a sterile reagent reservoir. Using a multichannel pipette, immediately dispense 25µl of the cell suspension to each of the inner 60 wells of the assay plates. Gently swirl the assay plates to ensure mixing of the SIRPα Effector Cells and antibody.
4. Add 75µl of assay buffer to each of the outside wells of the assay plates.
5. Cover the assay plates with lids and incubate in a 37°C, 5% CO<sub>2</sub> incubator for 4 hours.

**Note:** The 4-hour incubation was optimized using Anti-CD47 blocking antibody [B6.H12]. We recommend optimizing assay time (3–24 hours) with your antibody or other biologic samples.

#### 4.G. Preparing and Adding Bio-Glo-NL™ Reagent

We recommend preparing the Bio-Glo-NL™ Luciferase Assay Reagent immediately before use. Ensure that the Bio-Glo-NL™ Luciferase Assay Buffer is equilibrated to room temperature (do not exceed 25°C) before reconstituting the reagent. **Do not** store the reconstituted reagent. Once reconstituted, the reagent will lose 10% activity in approximately 8 hours at room temperature.



**Note:** The SIRPα/CD47 Blockade Bioassay, Fc-Dependent, is compatible only with Bio-Glo-NL™ Luciferase Assay Reagent. **Do not** use Bio-Glo™ Luciferase Assay Reagent with the SIRPα/CD47 Blockade Bioassay, Fc-Dependent.

1. Remove the Bio-Glo-NL™ Luciferase Assay Substrate from –30°C to –10°C storage and mix by pipetting. Briefly centrifuge the tubes if the substrate has collected in the cap or on the sides of the tubes.
2. Prepare the desired amount of reconstituted Bio-Glo-NL™ Luciferase Assay Reagent by combining one volume of substrate with 50 volumes of buffer. For example, if the experiment requires 10ml of reagent, add 200µl of substrate to 10ml of buffer. Ten milliliters (10ml) of Bio-Glo-NL™ Reagent is sufficient for 120 wells (two assay plates, using the inner 60 wells of each plate).
3. Remove assay plates from the incubator after the incubation period and equilibrate to room temperature for 10–15 minutes.
4. Using a manual multichannel pipette, add 75µl of Bio-Glo-NL™ Reagent to the inner 60 wells of the assay plates, taking care not to create bubbles.
5. Add 75µl of Bio-Glo-NL™ Luciferase Assay Reagent to wells B1, D1 and F1 of each assay plate to measure background signal.
6. Wait for 5–10 minutes, then measure the luminescence in a GloMax® Discover System or a plate reader with glow-type luminescence reading capabilities. The luminescence intensity will decay gradually, with a signal half-life of approximately 120 minutes at room temperature.

**Note:** Varying the Bio-Glo-NL™ incubation time will affect the raw relative light unit (RLU) values but should not significantly change the EC<sub>50</sub> value and maximum fold induction.

#### 4.H. Data Analysis

1. Determine the plate background by calculating the average RLU from wells B1, D1 and F1.
2. Calculate fold induction:

$$\text{Fold Induction} = \frac{\text{RLU (induced - background)}}{\text{RLU (no antibody control - background)}}$$

3. Graph data as RLU versus  $\text{Log}_{10}$  [antibody] and fold induction versus  $\text{Log}_{10}$  [antibody]. Fit curves and determine the  $\text{EC}_{50}$  value of antibody response using appropriate curve fitting software (such as GraphPad Prism® software).

#### 5. Troubleshooting

For questions not addressed here, please contact your local Promega Branch Office or Distributor. Contact information available at: [www.promega.com](http://www.promega.com). Email: [techserv@promega.com](mailto:techserv@promega.com)

##### Symptoms

Low luminescence measurements (RLU readout)

##### Causes and Comments

Ensure that you are using Bio-Glo-NL™ Reagent, which is designed for NanoLuc® Luciferase reporter bioassays. The SIRPa/CD47 Blockade Bioassay, Fc-Dependent, is not compatible with Bio-Glo™ Reagent, which is designed for firefly luciferase reporter bioassays.

Choose an instrument designed for plate-reading luminescence detection. Instruments designed primarily for fluorescence detection are not recommended. Luminometers measure and report luminescence as relative values, and actual RLU numbers will vary between instruments.

Some low-sensitivity luminometers models should be avoided. If using a reader with an adjustable gain, we recommend a high-gain setting.

Insufficient cells per well can lead to low RLU. Handle and plate cells according to the instructions to ensure a sufficient number of viable cells per well.

Low activity of Bio-Glo-NL™ Reagent leads to low RLU. Store and handle Bio-Glo-NL™ Reagent according to the instructions. For best results, prepare immediately before use.



## 5. Troubleshooting (continued)

<b>Symptoms</b>	<b>Causes and Comments</b>
Weak assay response (low fold induction)	<p>Optimize the concentration range of your test sample(s) to achieve a full dose response with complete upper and lower asymptotes. The EC<sub>50</sub> value obtained with the SIRPα/CD47 Blockade Bioassay, Fc-Dependent, may vary from the EC<sub>50</sub> value obtained using other methods such as primary macrophage-based assays.</p> <hr/> <p>Assay response requires a functional Fc domain. For Fc-silent or Fc-null SIRPα/CD47 inhibitors, we recommend using the SIRPα/CD47 Blockade Bioassay (Cat.# JA6012).</p> <hr/> <p>The assay is sensitive to the concentration of FBS in assay buffer. Optimize the FBS concentration from 0.5–10% in assay buffer if assay performance is not ideal.</p> <hr/> <p>Optimize the assay incubation time within a range of 3–24 hours.</p> <p>If untreated control RLU is less than 100-fold above plate reader background RLU, subtract plate background RLU from all samples before calculating fold induction.</p>
Variability in assay performance	<p>Ensure that you are using Bio-Glo-NL™ Reagent, which is designed for NanoLuc® Luciferase reporter bioassays. The SIRPα/CD47 Blockade Bioassay, Fc-Dependent, is not compatible with Bio-Glo™ Reagent, which is designed for firefly luciferase reporter bioassays.</p>

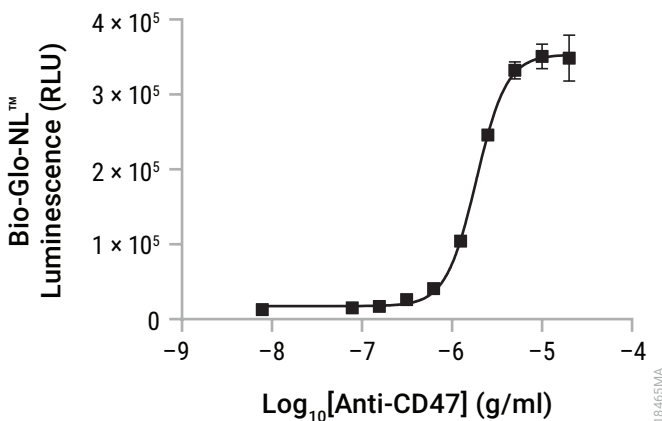
## 6. References

- Overdijk, M.B. *et al.* (2015) Antibody-mediated phagocytosis contributes to the anti-tumor activity of the therapeutic antibody daratumumab in lymphoma and multiple myeloma. *MAbs* **7**, 311–21.
- Shi, Y. *et al.* (2015) Trastuzumab triggers phagocytic killing of high HER2 cancer cells in vitro and in vivo by interaction with Fcγ receptors on macrophages. *J. Immunol.* **194**, 4379–86.
- VanDerMeid, K.R. *et al.* (2018) Cellular cytotoxicity of next-generation CD20 monoclonal antibodies. *Cancer Immunol. Res.* **6**, 1150–60.
- Cao, X. *et al.* (2022) Promoting antibody-dependent cellular phagocytosis for effective macrophage-based cancer immunotherapy. *Sci. Adv.* **8**, eabl9171.
- Oldenburg, P.A. *et al.* (2000) Role of CD47 as a marker of self on red blood cells. *Science* **288**, 2051–4.
- Veillette, A. and Chen, J. (2018) SIRPα–CD47 immune checkpoint blockade in anticancer therapy. *Trends Immunol.* **39**, 173–84.

## 7. Appendix

### 7.A. Representative Assay Results

The following data were generated using the SIRP $\alpha$ /CD47 Blockade Bioassay, Fc-Dependent, with Anti-CD47 blocking antibody [B6.H12] (Figure 8).



**Figure 8. The SIRP $\alpha$ /CD47 Blockade Bioassay, Fc-Dependent, measures the activity of Anti-CD47 blocking antibody.** CD47 CHO-K1 Target Cells were added to a 96-well assay plate 20 hours prior to the assay. On the day of assay, SIRP $\alpha$  Effector Cells and a titration of Anti-CD47 blocking antibody [B6.H12], were added. After a 4-hour induction at 37°C, Bio-Glo-NL™ Reagent was added and luminescence measured using the GloMax® Discover System. Data were fitted to a four-parameter logistic curve using GraphPad Prism® software. The EC<sub>50</sub> was 1.9 $\mu$ g/ml and the fold induction was 27.

## 7.B. Related Products

### Fc Effector Bioassays

Product	Size	Cat.#
ADCC Reporter Bioassay, Complete Kit (Raji)*	1 each	G7015
ADCC Reporter Bioassay, Core Kit*	1 each	G7010
ADCC Reporter Bioassay, F Variant, Core Kit**	1 each	G9790
ADCC Reporter Bioassay, Target Kit (Raji)*	1 each	G7016
FcγRIIIa-H ADCP Reporter Bioassay, Complete Kit**	1 each	G9901
FcγRIIIa-H ADCP Reporter Bioassay, Core Kit**	1 each	G9991
Mouse FcγRIV ADCC Bioassay, Complete Kit	1 each	M1201
Mouse FcγRIV ADCC Bioassay, Core Kit	1 each	M1211
Membrane TNFα Target Cells**	1 each	J3331
Membrane RANKL Target Cells**	1 each	J3381

\*For Research Use Only. Not for use in diagnostic procedures.

\*\*Not for Medical Diagnostic Use.

Additional kit formats are available.

### Fc Effector Immunoassay

Product	Size	Cat.#
Lumit® FcRn Binding Immunoassay	100 assays	W1151

Not for Medical Diagnostic Use. Additional kit formats and sizes are available.

### Immune Checkpoint Bioassays

Product	Size	Cat.#
4-1BB Bioassay	1 each	JA2351
CD28 Bioassay	1 each	JA6701
CD28 Blockade Bioassay	1 each	JA6101
CD40 Bioassay	1 each	JA2151
CTLA-4 Blockade Bioassay	1 each	JA3001
GITR Bioassay	1 each	JA2291
ICOS Bioassay	1 each	JA6801
ICOS Blockade Bioassay	1 each	JA6001
LAG-3/MHCII Blockade Bioassay	1 each	JA1111
OX40 Bioassay	1 each	JA2191

### Immune Checkpoint Bioassays (continued)

Product	Size	Cat. #
PD-1/PD-L1 Blockade Bioassay	1 each	J1250
PD-1+TIGIT Combination Bioassay	1 each	J2211
PD-L1 Negative Cells	1 each	J1191
TIGIT/CD155 Blockade Bioassay	1 each	J2201

Not for Medical Diagnostic Use. Additional kit formats and sizes are available.

### Macrophage-Derived Bioassays

Product	Size	Cat. #
SIRP $\alpha$ /CD47 Blockade Bioassay	1 each	JA6011
SIRP $\alpha$ /CD47 Blockade Bioassay, Fc-Dependent	1 each	JA4801
TLR Bioassay	1 each	JA9011

Not for Medical Diagnostic Use. Additional kit formats and sizes are available.

### T Cell Activation Bioassays

Product	Size	Cat. #
T Cell Activation Bioassay (IL-2)	1 each	J1651
T Cell Activation Bioassay (NFAT)	1 each	J1621
T Cell Activation Bioassay (TCR $\alpha\beta$ -KO, CD4+)	1 each	GA1172
T Cell Activation Bioassay (TCR $\alpha\beta$ -KO, CD8+)	1 each	GA1162
T Cell Activation Bioassay (TCR $\alpha\beta$ -KO, CD4+, CD8+)	1 each	GA1182

Not for Medical Diagnostic Use. Additional kit formats are available.

### Cytokine and Growth Factor Bioassays

Product	Size	Cat. #
IL-2 Bioassay	1 each	JA2201
IL-6 Bioassay	1 each	JA2501
IL-12 Bioassay	1 each	JA2601
IL-15 Bioassay	1 each	JA2011
IL-23 Bioassay	1 each	JA2511
RANKL Bioassay	1 each	JA2701
VEGF Bioassay	1 each	GA2001

Not for Medical Diagnostic Use. Additional kit formats are available.



## 7.B. Related Products (continued)

### Control Antibodies and Proteins

Product	Size	Cat.#
Control Ab, Anti-4-1BB	50µg	K1161
Control Ab, Anti-CD20	5µg	GA1130
Control Ab, Anti-CD40	50µg	K1181
Control Ab, Anti-CTLA-4	100µg	JA1020
Control Ab, Anti-LAG-3	100µg	K1150
Control Ab, Anti-OX40	50µg	K1191
Control Ab, Anti-PD-1	100µg	J1201
Control Ab, Anti-SIRPα	50µg	K1251
Control Ab, Anti-TIGIT	100µg	J2051
Control Ab, Anti-TIM-3	100µg	K1210
Recombinant VEGF ligand	10µg	J2371

### Detection Reagents

Product	Size	Cat.#
Bio-Glo™ Luciferase Assay System	10ml	G7941
	100ml	G7940
Bio-Glo-NL™ Luciferase Assay System	10ml	J3081
	100ml	J3082
	1,000ml	J3083

Not for Medical Diagnostic Use.

### Luminometers

Product	Size	Cat.#
GloMax® Navigator System	1 each	GM2000
GloMax® Discover System	1 each	GM3000
GloMax® Explorer System	1 each	GM3500

For Research Use Only. Not for use in diagnostic procedures.

**Note:** Additional Fc Effector, Immune Checkpoint, T Cell Activation and Cytokine Bioassays are available. To view and order Promega Bioassay products visit: [www.promega.com/products/reporter-bioassays/](http://www.promega.com/products/reporter-bioassays/) or visit Promega Tailored Solutions website: [www.promega.com/custom-solutions/tailored-solutions/](http://www.promega.com/custom-solutions/tailored-solutions/) or email: [tailoredsolutions@promega.com](mailto:tailoredsolutions@promega.com)

## 8. Summary of Changes

The following changes were made to the 10/24 revision of this document:

1. Corrected text in the ICH title in the Description.
2. Patent statement (c) was updated.
3. Lumit trademark was updated.

<sup>(a)</sup>NOT FOR MEDICAL DIAGNOSTIC USE. FOR IN VITRO USE ONLY. BY USE OF THIS PRODUCT, RECIPIENT AGREES TO BE BOUND BY THE TERMS OF THIS LIMITED USE STATEMENT. If the recipient is not willing to accept the conditions of this limited use statement, and the product is unused, Promega will accept return of the unused product and provide the recipient with a full refund. This product may not be further sold or transferred by the recipient and may be used only by the recipient, and then only for (1) research use; (2) discovery, development and monitoring of biologic drugs and vaccines; (3) quality assurance testing of biologic drugs and vaccines; and (4) product release assays for biologic drugs and vaccines. No other commercial use is allowed. "Commercial use" means any and all uses of this product by recipient for monetary or other consideration, including providing a service, information or data to unaffiliated third parties, and resale of this product for any use. Recipient has no right to propagate, modify, derivatize, genetically engineer or otherwise create variations of the cells or genes stably transfected within the cells. In addition, recipient must use Bio-Glo-NL™ Luciferase Assay System purchased from Promega Corporation for all luminescence assays using this product or contact Promega to obtain a license for use of this product with reagents other than Promega's. PROMEGA MAKES NO REPRESENTATIONS OR WARRANTIES OF ANY KIND, EITHER EXPRESSED OR IMPLIED, INCLUDING AS TO MERCHANTABILITY OR FITNESS FOR A PARTICULAR PURPOSE WITH REGARDS TO THIS PRODUCT. The terms of this agreement shall be governed under the laws of the State of Wisconsin, USA.

<sup>(b)</sup>U.S. Pat. No. 8,809,529, European Pat. No. 2635582, Japanese Pat. No. 5889910 and other patents and patents pending.

<sup>(c)</sup>U.S. Pat. Nos. 8,557,970, 8,669,103, 9,777,311, 9,840,730, 9,951,373, 10,233,485, 10,633,690, 10,774,364, 10,844,422, 11,365,436, 11,661,623, 11,667,950; European Pat. Nos. 2456864, 2635595, 2990478, 3181687, 3409764; Japanese Pat. Nos. 6038649, 6155424, 6227615, 6374420, 6539689; and other patents and patents pending.

<sup>(d)</sup>Licensed from Lonza Cologne GmbH under U.S. Pat. Nos. 7,700,357, 8,192,990 and 8,003,389, European Pat. Nos. 1297119, 1522587, 1607484, 1741778 and 3409764 and other pending and issued patents.

<sup>(e)</sup>Product cannot be used for proficiency testing.

© 2023–2024 Promega Corporation. All Rights Reserved.

GloMax, Lumit and NanoLuc are registered trademarks of Promega Corporation. Bio-Glo and Bio-Glo-NL are trademarks of Promega Corporation.

Accutase is a registered trademark of Innovative Cell Technologies. Corning and Costar are registered trademarks of Corning, Inc. Dilux is a trademark of Dilux, LLC. GIBCO is a trademark of Life Technologies Corp. GraphPad Prism is a registered trademark of GraphPad Software, Inc.

Products may be covered by pending or issued patents or may have certain limitations. Please visit our website for more information.

All prices and specifications are subject to change without prior notice.

Product claims are subject to change. Please contact Promega Technical Services or access the Promega online catalog for the most up-to-date information on Promega products.